

DEKRA's commission No. : PKOL(W)/LODZ/02576/25/01/13
commission/ damage No. : PS21/04310
Date of commission: 13-01-2025

DEKRA Poland - Headquarters
02-673 Warszawa, ul. Konstruktorska 12A

Client :

PKO Leasing SA
Świętokrzyska 36
00-116 Warszawa

Expert:

Marcin Sosnowski.
DEKRA Polska - Centrala
inż. Józef Orłowski
TU - Włocławek

NOTE:

Due to the use of the document it was removed from it any information relating to the value of the vehicle, the price of equipment, adjustments, etc..

Vehicle data

Group of objects (Eurotax)	cars
EC code (Eurotax)	0150119
Manufacturer	RENAULT
Model	Arkana 21-23
Type / version	Arkana 1.3 TCe mHEV Intens EDC
Body type	hatchback
Number of doors / seats	5/5
Curb weight [kg]	1359
Gross vehicle weight [kg]	1876
Wheelbase 1/2	2720
Engine type	spark ignition
Pollution reduction system	GPF
Engine capacity [ccm]	1332
Engine Power [hp/kW]	140/103
Gearbox	automatic 7- gear
Registration /record No.	DSWMR92
VIN / serial number	VF1RJL00X67246297
Date of first registration	05-07-2021
Date of next. tech. test	05-04-2026
Year of manufacture	2021 (year has been verified with the manufacturer's base)
Readout [km]	72 057 (read)
Body color / type of coating	black/METALIK

Tyres

axle	Wheel	Manufacturer, type	Size	Measured profile
Front	right	AUSTONE, SKADI SP-901	215/55 18 95H	3,0 mm
	left	AUSTONE, SKADI SP-901	215/55 18 95H	3,0 mm
back	right	AUSTONE, SKADI SP-901	215/55 18 95H	4,5 mm
	left	AUSTONE, SKADI SP-901	215/55 18 95H	4,5 mm

Standard equipment by Eurotax

- | | |
|---|---|
| 1. Active Emergency Brake Assist, Pedestrian Emergency Brake Assist | 27. Keyless go |
| 2. Android Auto, Apple CarPlay, DAB radio, Navigation system, On board monitor, Radio | 28. LED front dim light |
| 3. Antilock-Brake-System (ABS) | 29. Lane control assistant |
| 4. Artificial leather upholstery, Textile upholstery | 30. Leather steering wheel |
| 5. Automated High-beam assist | 31. Light Alloy wheels 18'' |
| 6. Automatic climate control | 32. Mobile Tire System |
| 7. Automatic dimlight activation, Rain sensor | 33. On board computer |
| 8. Blind spot warning | 34. On board monitor |
| 9. Body-coloured bumpers | 35. Other |
| 10. Brake Assist | 36. Park Assistant |
| 11. Central locking | 37. Park Distance Control front, Park Distance Control rear |
| 12. Child seat fixation | 38. Power steering |
| 13. Cruise control | 39. Power windows front |
| 14. Distance control | 40. Power windows rear |
| 15. Door mirror(s) electrically adjustable in general, Door mirrors electrically foldable | 41. Quick charging function |
| 16. Driver airbag, Passenger airbag | 42. Rear bench foldable in two separate parts |
| 17. Driver seat with adjustable inclination, Passenger seat with adjustable inclination | 43. Rear headrests |
| 18. ESP (Electronical Stabilizing Program) | 44. Rear view camera |
| 19. Electric parking brake | 45. Rear-view mirror autodimming |
| 20. Exterior design: other | 46. Seatbelts vertically adjustable front, Seatbelts vertically adjustable rear |
| 21. Head airbags front, Head airbags rear | 47. Selectable driveline characteristics |
| 22. Headrests front | 48. Side airbag driver and passenger |
| 23. Hill holder | 49. Tinted rear windows |
| 24. Interior lights: other accessories | 50. Traffic sign recognition |
| 25. Interior: other | 51. Tyre pressure control (RDC) |
| 26. Interior: other | 52. Uni-Lackierung |

Dealer's equipment (selected items)

- | | |
|---|---|
| 1. Diminished spare wheel | - |
| 2. Heated seat driver, Heated seat passenger, Steering wheel heated | - |
| Fotele przednie ogrzewane | |
| Kierownica podgrzewana | |
| 3. Metallic paint | - |
| 4. Other | - |

Base value of the vehicle

Base value of the vehicle by Eurotax (net)

Corrections

First registration

Mileage

EquipmentTyresOther

Earlier repairs -
stwierdzone braki i uszkodzenia -

Above figure was estimated on the basis of price quotations of used cars on the Polish market Eurotax (database number 01-2025 POL) with regard to technical and market parameters affecting the value of the vehicle.

Basic print without information about the vehicle's value - duey to use of the document any information relating to the value of the vehicle, the price of equipment, adjustments, etc.. were removed

Date: 18-01-2025

DEKRA's expert:
Marcin Sosnowski.
inż. Józef Orłowski

Document issued electronically valid without signature.

Measurement of thickness of the vehicle lacquer coating



No. of controlled item	Controlled item	Measured range of thickness of the lacquer coat [μm]
1	Front cover	to 150
2	Front left fender	to 150
3	Left front pillar	to 150
4	Front left door	150 - 200
5	Roof	to 150
6	Left middle pillar	to 150
7	Right side sill	to 150
8	Left rear door	to 150
9	Rear left fender	to 150
10	Cover/lid	to 150
11	Right rear fender	to 150
12	Right rear door	to 150
13	Right middle pillar	to 150
14	Right side sill	to 150
15	Front right door	to 150
16	Right front pillar	to 150
17	Front right fender	to 150

Description of the technical condition

A detailed description of the technical condition contains in Description of the technical condition attached to following expertise.

General comments - regarding valuation

Vehicle documents

During the inspection the registration proof of the vehicle was presented and its photo was taken and enclosed to the expertise.

During the inspection the service book was presented and its number is given below:

.

Information concerning the origin of the vehicle

The vehicle purchased domestically from an authorized representative of the brand.

Anti-theft protection - immobilizer

- as a result of the inspection of the vehicle found no malfunctions of the immobilizer in the extent possible to determine during the inspection of the vehicle in the non- workshop conditions.

Anti-theft protection - other:

not found

Additional comments on the car:

Not applicable.

Test drive

Test drive of the vehicle was conducted. Test drive in the full extent is not possible. Comment below:
ograniczenia parkingowe

Checking of the correctness and / or construction of identification / serial numbers of the object:

Not tested

Verification of the accuracy of the object data, including year of production, and other.

Not conducted - adopted according to the documents presented and indicated sources.

-
- The read odometer status has not been verified with records in electronic equipment of the vehicle.
 - This expertise is used exclusively to estimate the market value of the item pricing and can not be used for any purpose other than those mentioned above.
 - An expert assumes no responsibility for hidden defects (legal and physical) and the possible consequences arising from the continuing use of the subject of valuation, and for the consequences of using the same valuation.
 - The above pricing is not an expertise of the technical condition of the subject of valuation and as such can not be considered, in particular, can not be treated as a guarantee for the sales subject of the valuation for estimated value.
 - This evaluation may not be published as whole in any document without consent of its executors and without their consent as to the form and contents of such publication.
 - The evaluation has been carried out basing on delivered documentation and organoleptic examination of

the assessed object. No diagnostic examination has been carried out, nor any workshop verification of the assessed object.

- This expertise has been issued basing on inspection of the assessed object in conditions ruling in its availability location.

Comments to the commission - regarding valuation

Kluczyki

TAK

2

Expert comments - regarding valuation

Brak półki bagażnika. Rysy, odpryski i wgniecenia na samochodzie. Rzeczoznawca dokonał oględzin pojazdu w warunkach parkingowych, co mogło ograniczyć pełną ocenę jego stanu technicznego. Dodatkowo, jeżeli jazda próbna została przeprowadzona (informacje w treści raportu), to wykonano ją w warunkach parkingowych, z niewielką prędkością, co może nie odzwierciedlać pełnych warunków eksploatacyjnych. Istnieje możliwość, że w innych okolicznościach ujawnią się dodatkowe uszkodzenia lub usterki, których nie można było wykryć podczas obecnych oględzin.

Zalecamy zatem skorzystanie z możliwości oględzin pojazdu we własnym zakresie lub w Autoryzowanej Stacji Obsługi danej marki, co pozwoli na pełniejszą weryfikację stanu technicznego pojazdu przed udziałem w aukcji.

PHOTOGRAPHIC DOCUMENTATION



Photo 1.
Przekątna przednia lewa



Photo 2.
Przód

PHOTOGRAPHIC DOCUMENTATION



Photo 3.
Przekątna przednia prawa



Photo 4.
Bok prawy z przodu

PHOTOGRAPHIC DOCUMENTATION



Photo 5.
Bok prawy z tyłu



Photo 6.
Przekątna tylna prawa

PHOTOGRAPHIC DOCUMENTATION



Photo 7.
Tył



Photo 8.
Przekątna tylna lewa

PHOTOGRAPHIC DOCUMENTATION



Photo 9.
Bok lewy z tyłu



Photo 10.
Bok lewy z przodu

PHOTOGRAPHIC DOCUMENTATION



Photo 11.
Próg lewy (widok od przodu)



Photo 12.
Próg prawy (widok od przodu)

PHOTOGRAPHIC DOCUMENTATION



Photo 13.
Spód pojazdu przód



Photo 14.
Spód pojazdu tył

PHOTOGRAPHIC DOCUMENTATION



Photo 15.
Tarcza hamulcowa przednia prawa



Photo 16.
Tarcza hamulcowa tylna prawa

PHOTOGRAPHIC DOCUMENTATION



Photo 17.
Tarcza hamulcowa tylna lewa



Photo 18.
Tarcza hamulcowa przednia lewa

PHOTOGRAPHIC DOCUMENTATION



Photo 19.
Bagażnik



Photo 20.
Koło zapasowe

PHOTOGRAPHIC DOCUMENTATION



Photo 21.
Komora silnika

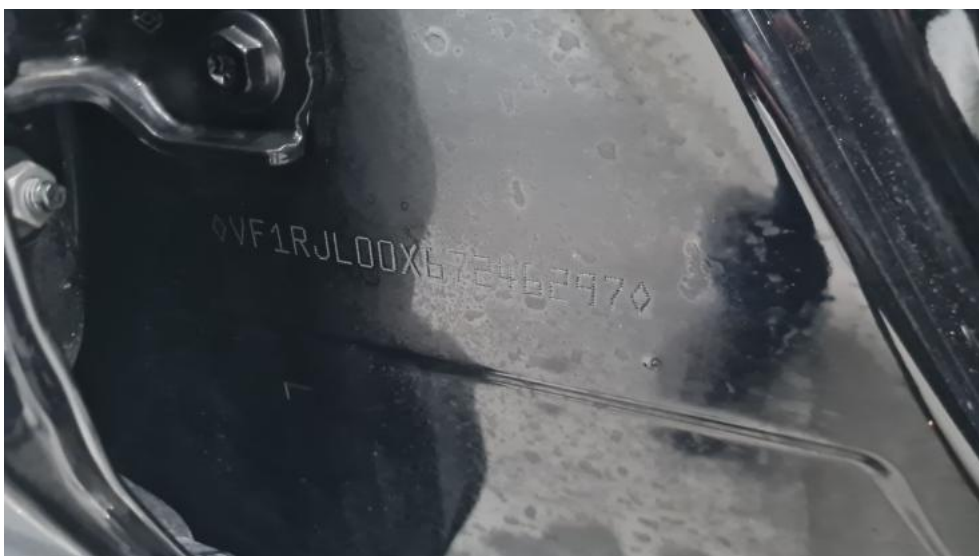


Photo 22.
Numer identyfikacyjny

PHOTOGRAPHIC DOCUMENTATION



Photo 23.
Tabliczka znamionowa



Photo 24.
Zestaw wskaźników - przebieg

PHOTOGRAPHIC DOCUMENTATION



Photo 25.

Widok przez otwarte drzwi przednie lewe



Photo 26.

Kierownica z lewej strony

PHOTOGRAPHIC DOCUMENTATION



Photo 27.

Widok przez otwarte drzwi tylne lewe



Photo 28.

Widok z tylnej kanapy na deskę rozdź.

PHOTOGRAPHIC DOCUMENTATION



Photo 29.
Konsola środkowa



Photo 30.
Tunel środkowy

PHOTOGRAPHIC DOCUMENTATION



Photo 31.
Kierownica (na wprost)



Photo 32.
Dowód rej. Str. 1

PHOTOGRAPHIC DOCUMENTATION



Photo 33.
Dow. Rej. Str.2 i klucze

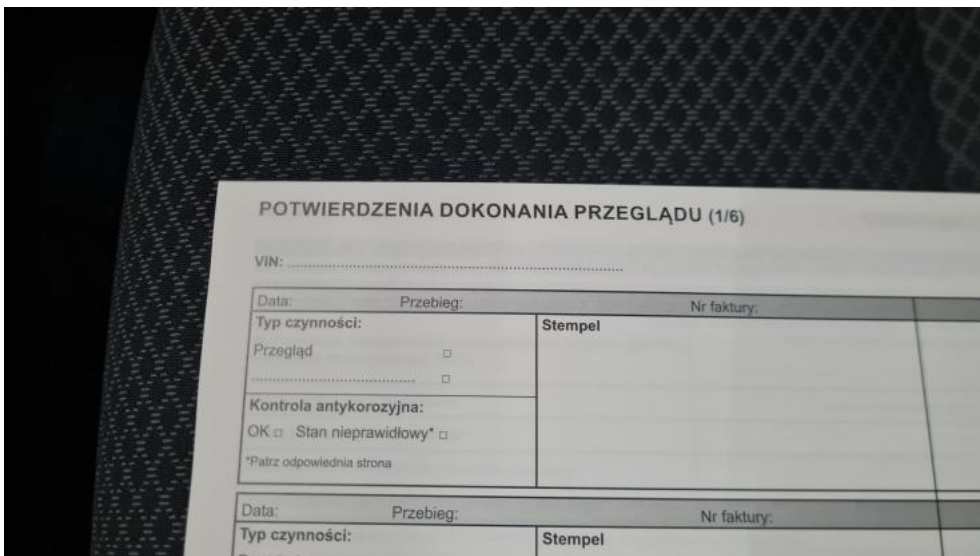


Photo 34.
Książka serwisowa – dane

PHOTOGRAPHIC DOCUMENTATION

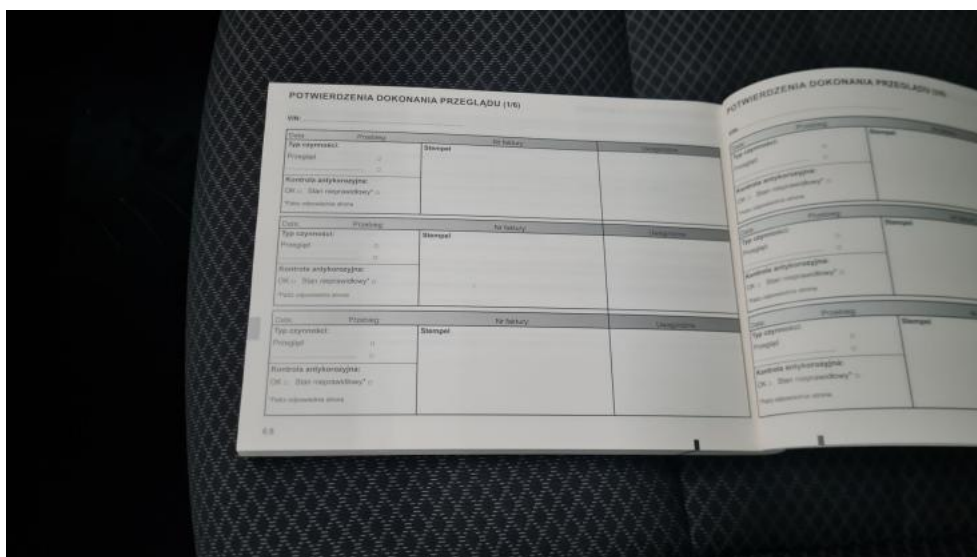


Photo 35.
Książka serwisowa – ostatni przegląd



Photo 36.
Instrukcje

PHOTOGRAPHIC DOCUMENTATION



Photo 37.
Zdjęcie do protokołu



Photo 38.
Pokrywa komory silnika - Rysa/odprysk 1

PHOTOGRAPHIC DOCUMENTATION



Photo 39.
Pokrywa komory silnika - Wgniecenie/odkształcenie 1



Photo 40.
Pokrywa komory silnika - Wgniecenie/odkształcenie 2

PHOTOGRAPHIC DOCUMENTATION



Photo 41.
Pokrywa komory silnika() - Wgniecenie/odkształcenie 3



Photo 42.
Pokrywa komory silnika - Inne 1

PHOTOGRAPHIC DOCUMENTATION



Photo 43.
Spoiler zderzaka przedniego - Rysa/odprysk 1



Photo 44.
Błotnik przedni P - Wgniecenie/odkształcenie 1

PHOTOGRAPHIC DOCUMENTATION



Photo 45.
Felga aluminiowa przednia P - Rysa/odprysk 1



Photo 46.
Drzwi przednie P - Rysa/odprysk 1

PHOTOGRAPHIC DOCUMENTATION



Photo 47.
Drzwi przednie P - Rysa/odprysk 2



Photo 48.
Drzwi przednie P - Wgniecenie/odkształcenie 1

PHOTOGRAPHIC DOCUMENTATION



Photo 49.
Drzwi przednie P - Wgniecenie/odkształcenie 2



Photo 50.
Drzwi tylne P - Rysa/odprysk 1

PHOTOGRAPHIC DOCUMENTATION



Photo 51.
Próg P - Rysa/odprysk 1



Photo 52.
Błotnik tylny P / Ściana boczna P - Rysa/odprysk 1

PHOTOGRAPHIC DOCUMENTATION



Photo 53.
Błotnik tylny P / Ściana boczna P - Rysa/odprysk 2



Photo 54.
Błotnik tylny P / Ściana boczna P - Wgniecenie/odkształcenie 1

PHOTOGRAPHIC DOCUMENTATION



Photo 55.
Felga aluminiowa tylna P - Rysa/odprysk 1



Photo 56.
Pokrywy bagażnika - Rysa/odprysk 1

PHOTOGRAPHIC DOCUMENTATION



Photo 57.
Pokrywy bagażnika - Wgniecenie/odkształcenie 1



Photo 58.
Zderzak tylny - Rysa/odprysk 1

PHOTOGRAPHIC DOCUMENTATION



Photo 59.
Zderzak tylny - Rysa/odprysk 2



Photo 60.
Dach - Wgniecenie/odkształcenie 1

PHOTOGRAPHIC DOCUMENTATION

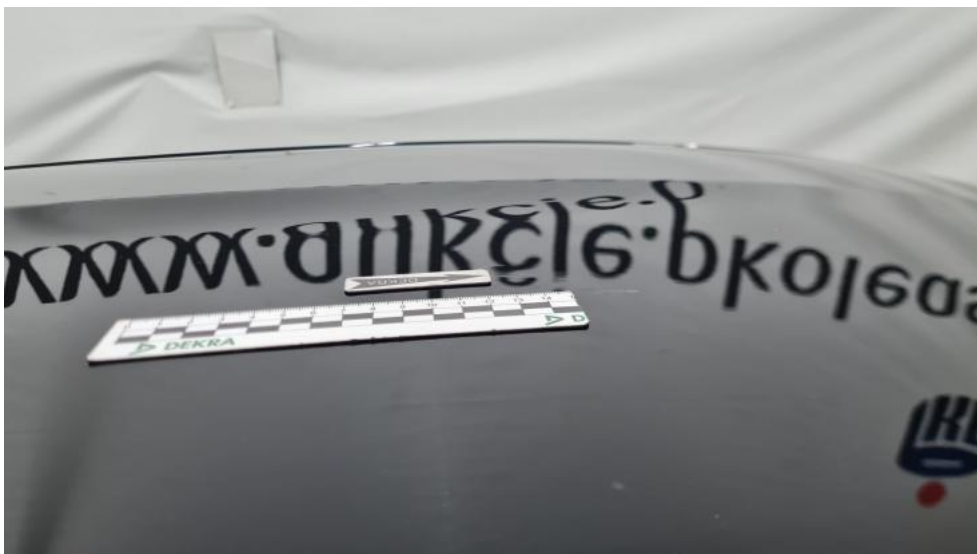


Photo 61.
Dach - Wgniecenie/odkształcenie 2



Photo 62.
Błotnik tylny L / Ściana boczna L - Wgniecenie/odkształcenie 1

PHOTOGRAPHIC DOCUMENTATION



Photo 63.

Drzwi przed L - Rysa/odprysk 1



Photo 64.

Drzwi przed L - Wgniecenie/odkształcenie 1

PHOTOGRAPHIC DOCUMENTATION



Photo 65.
Drzwi tylne L - Rysa/odprysk 1



Photo 66.
Drzwi tylne L - Rysa/odprysk 2

PHOTOGRAPHIC DOCUMENTATION



Photo 67.
Drzwi tylne L() - Rysa/odprysk 3



Photo 68.
Drzwi tylne L - Wgniecenie/odkształcenie 1

PHOTOGRAPHIC DOCUMENTATION



Photo 69.
Próg L - Rysa/odprysk 1



Photo 70.
Próg L - Rysa/odprysk 2

PHOTOGRAPHIC DOCUMENTATION



Photo 71.
Słupek środkowy L - Rysa/odprysk 1



Photo 72.
Błotnik przedni L - Rysa/odprysk 1

PHOTOGRAPHIC DOCUMENTATION



Photo 73.
Felga Aluminiowa przednia L - Rysa/odprysk 1



Photo 74.
Podsufitka - zdjęcie poglądowe 1

PHOTOGRAPHIC DOCUMENTATION



Photo 75.
Podsufitka - Inne 1